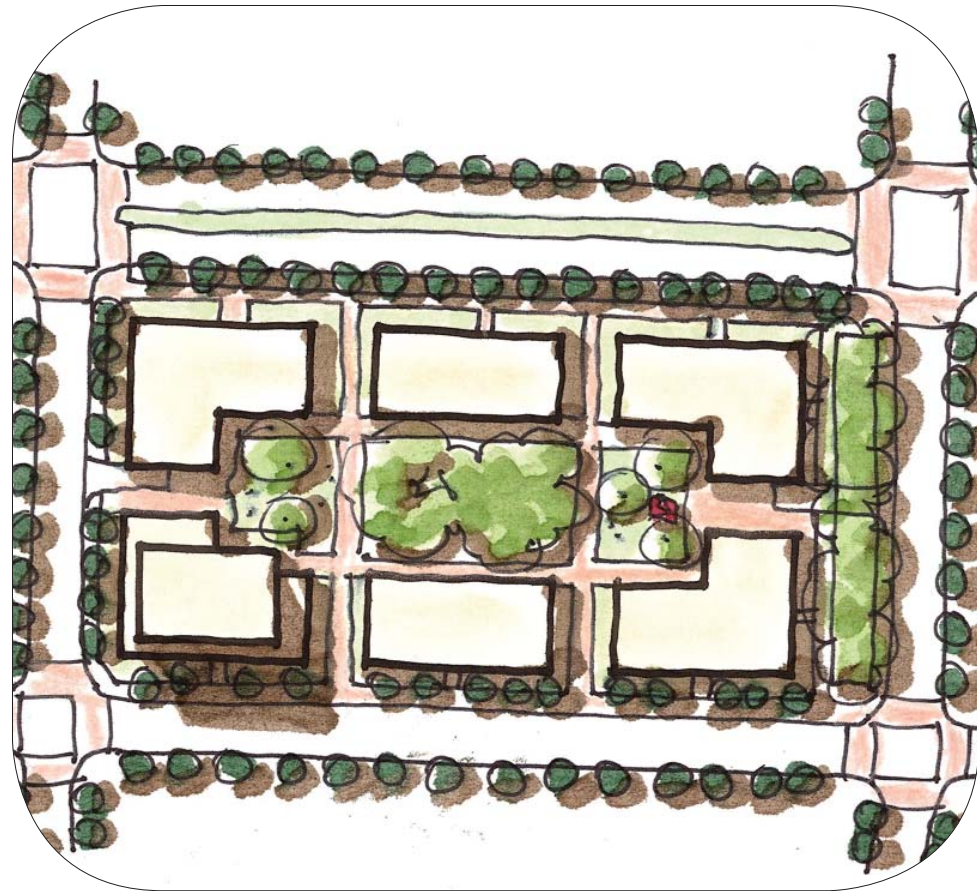


BUILT FORM LAND USES

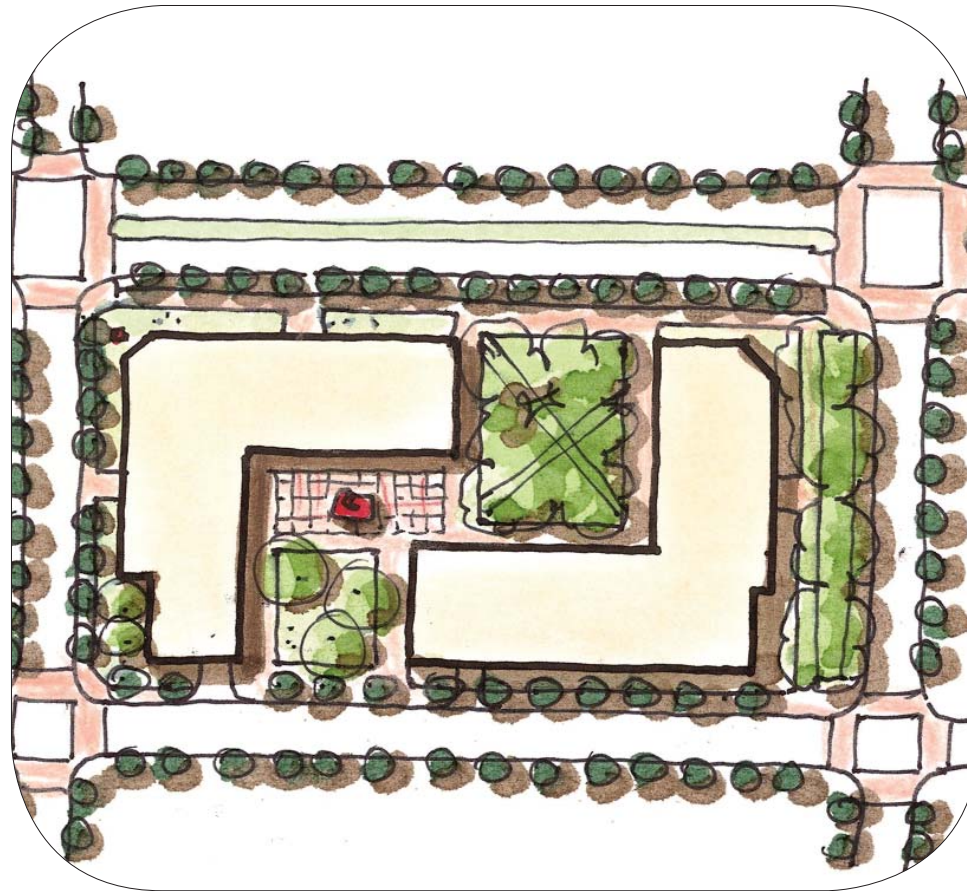
- EXISTING ACADEMIC BUILDINGS
- EXISTING RESIDENTIAL BUILDINGS
- MIXED-USE DEVELOPMENT (MIXED COMMERCIAL/RETAIL, RESIDENTIAL, ACADEM HOTEL, ETC.)
- CAMPUS RESIDENCES
- ACADEMIC DEVELOPMENT
- TRANSITION MIXED-USE (COULD INCLUDE RESIDENTIAL, OFFICE, ACADEMIC, HOTEL, ETC)
- OFFICE USES

FLEXIBLE BLOCK DEVELOPMENT

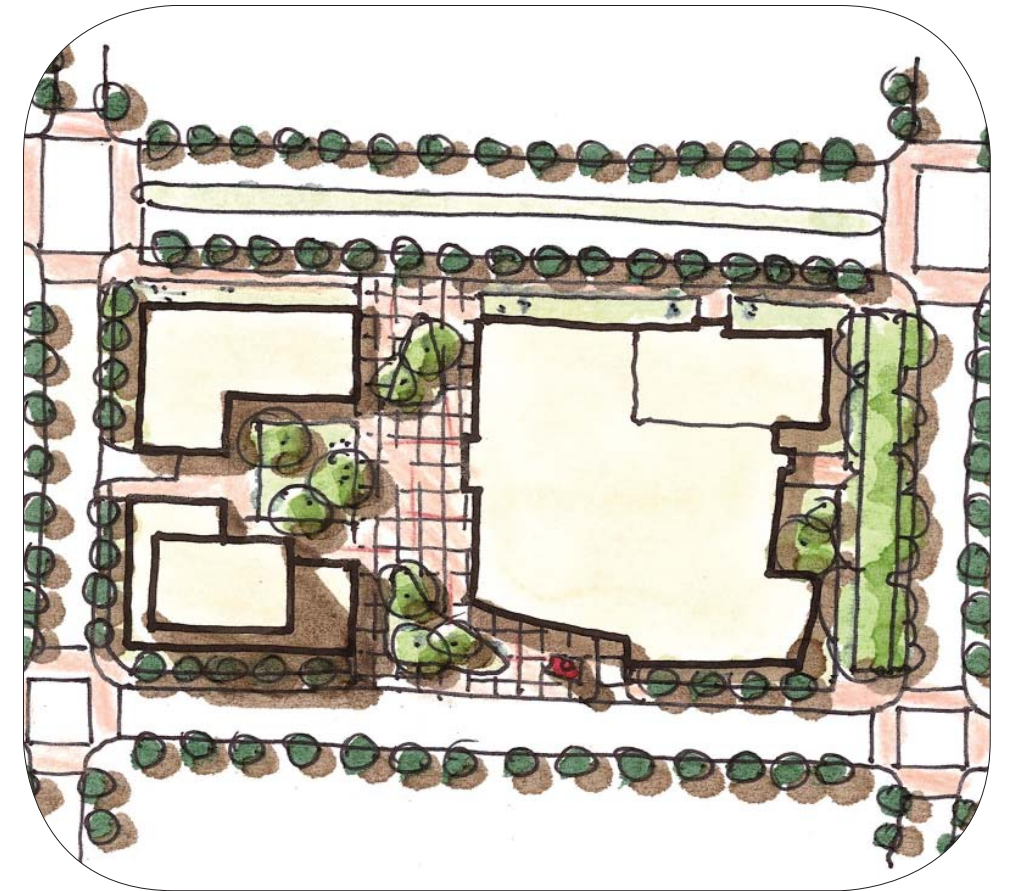
These diagrams show the different typologies that can be accommodated on the proposed block structure for the campus.



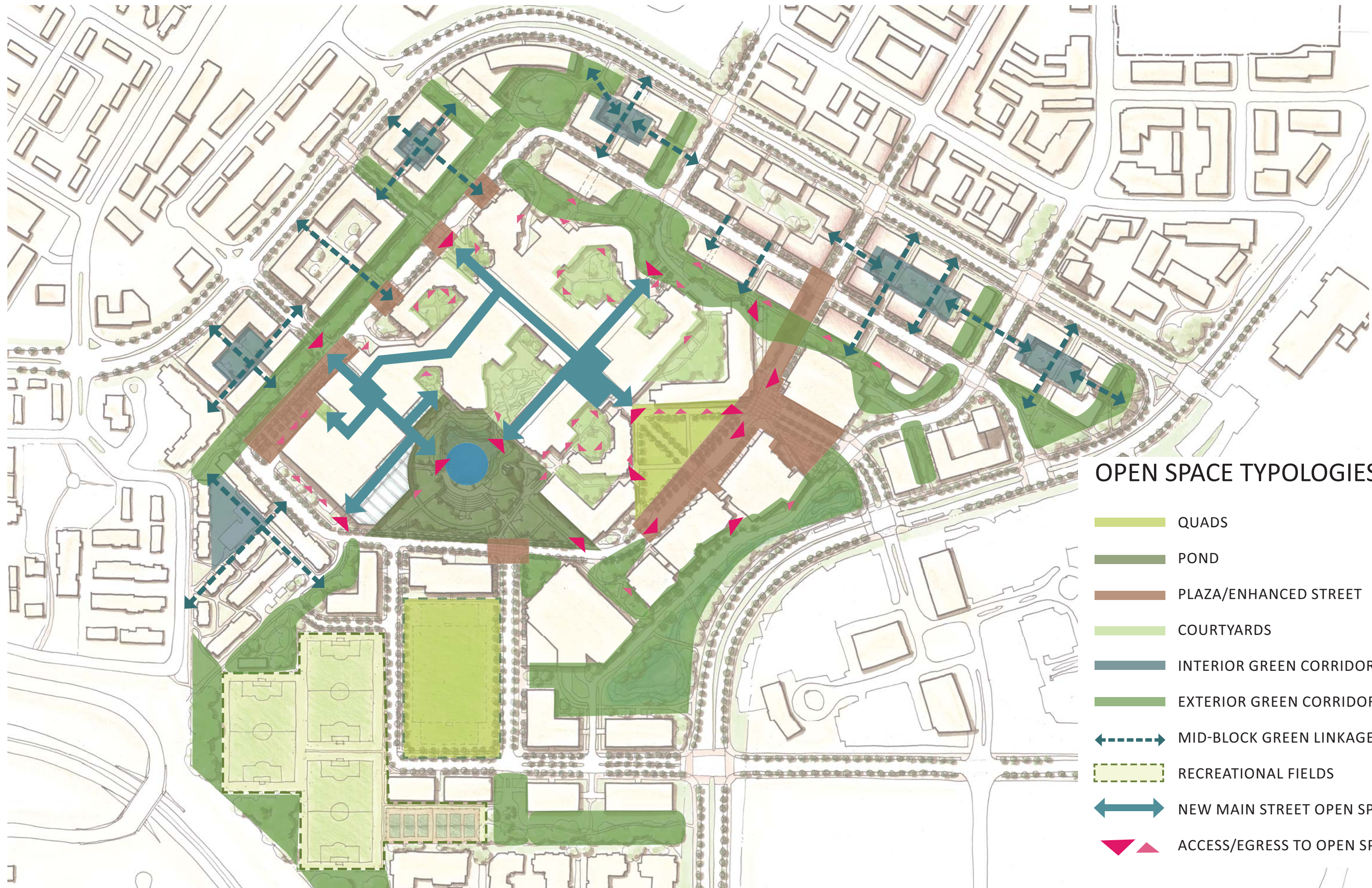
Mixed-use Typology



Academic Typology

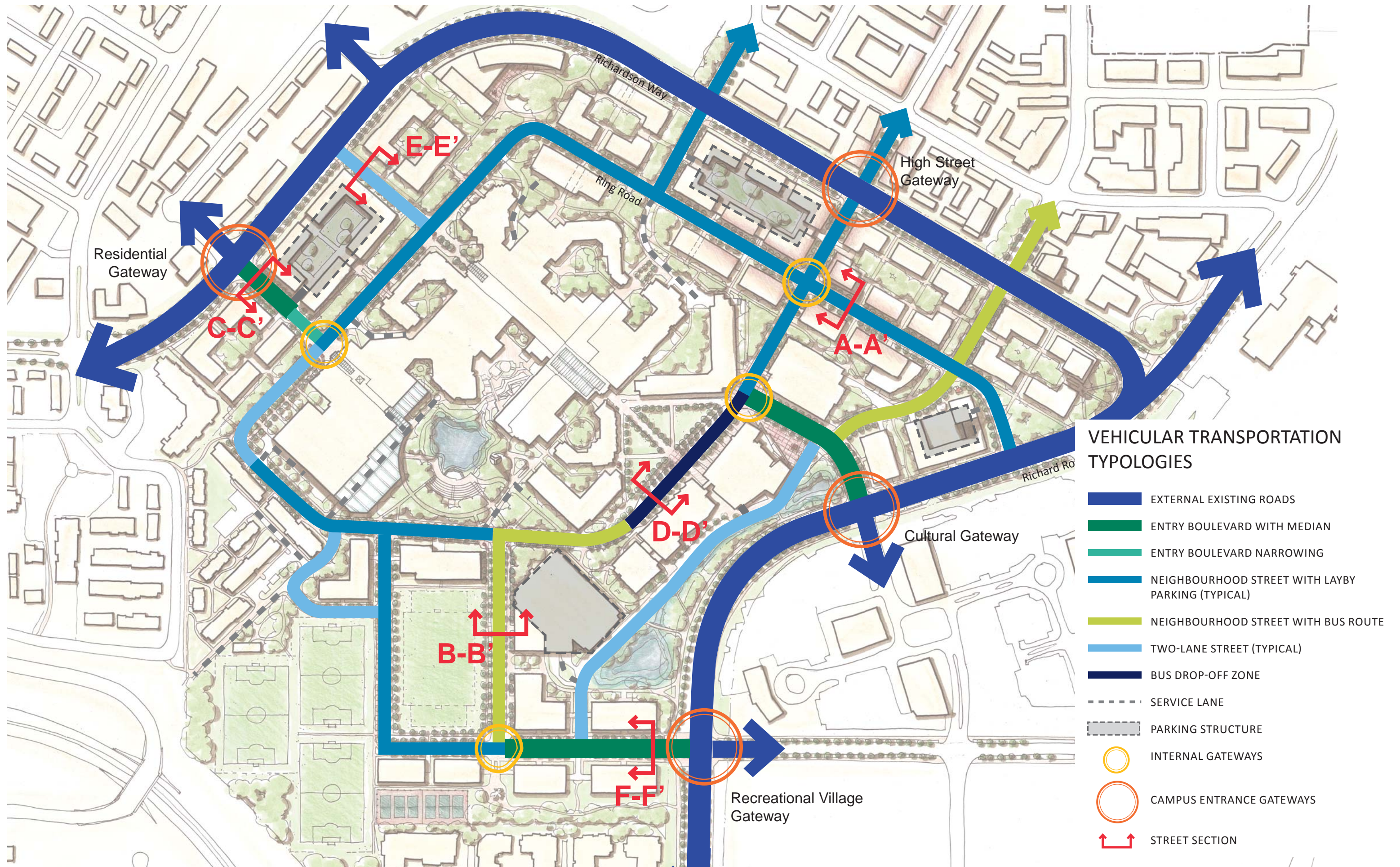


Mixed Academic & Mixed-use Typology



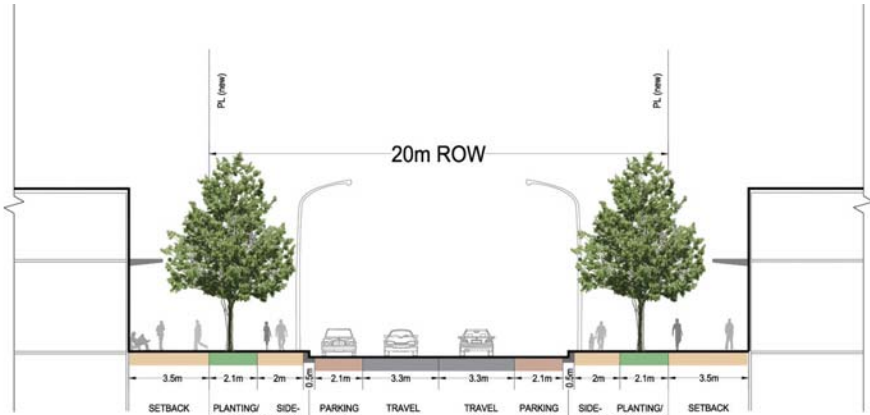
OPEN SPACE TYPOLOGIES

- QUADS
- POND
- PLAZA/ENHANCED STREET
- COURTYARDS
- INTERIOR GREEN CORRIDORS
- EXTERIOR GREEN CORRIDORS
- MID-BLOCK GREEN LINKAGES
- RECREATIONAL FIELDS
- NEW MAIN STREET OPEN SPACE
- ACCESS/EGRESS TO OPEN SPACE

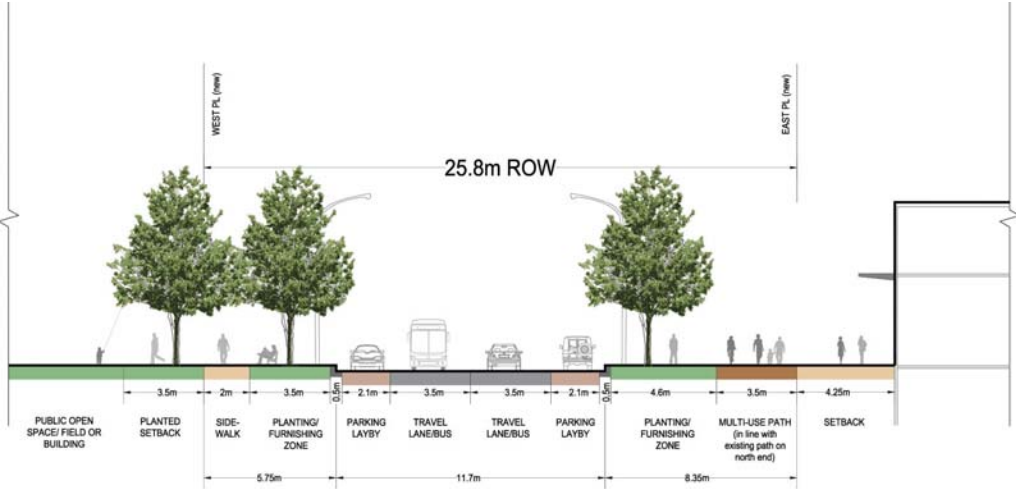


STREET SECTIONS

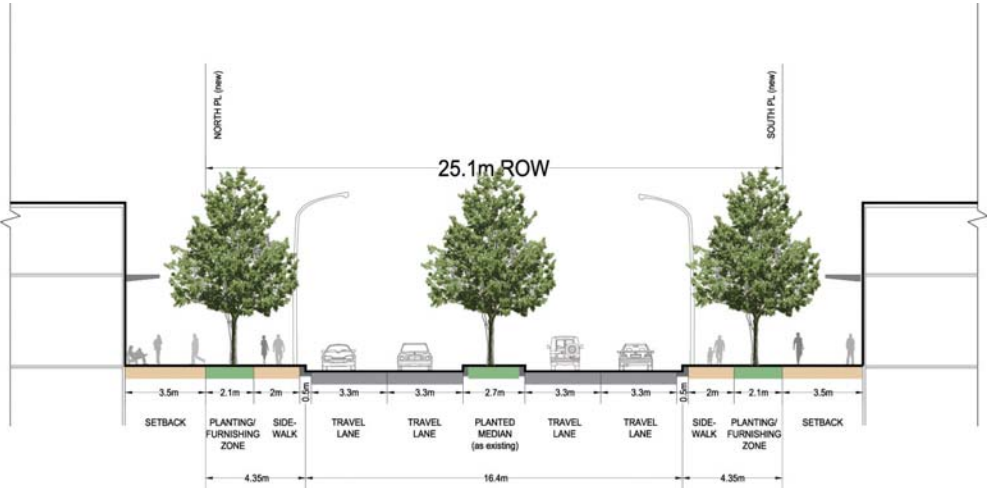
Referenced on Vehicular Transportation
Typologies Plan



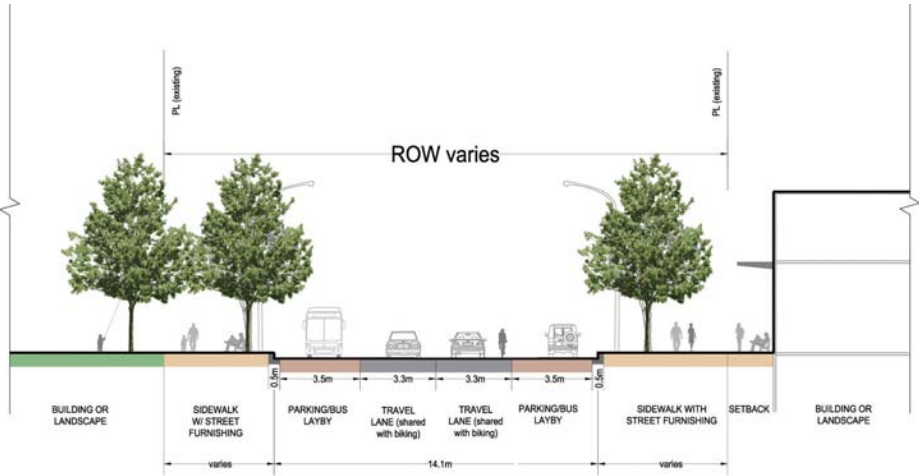
Neighbourhood Street - Typical (Section A-A')



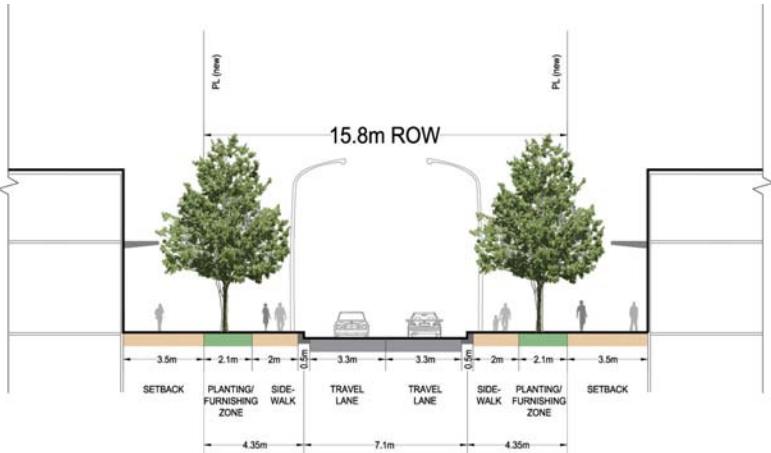
Neighbourhood Street with Layby Parking (Section B-B')



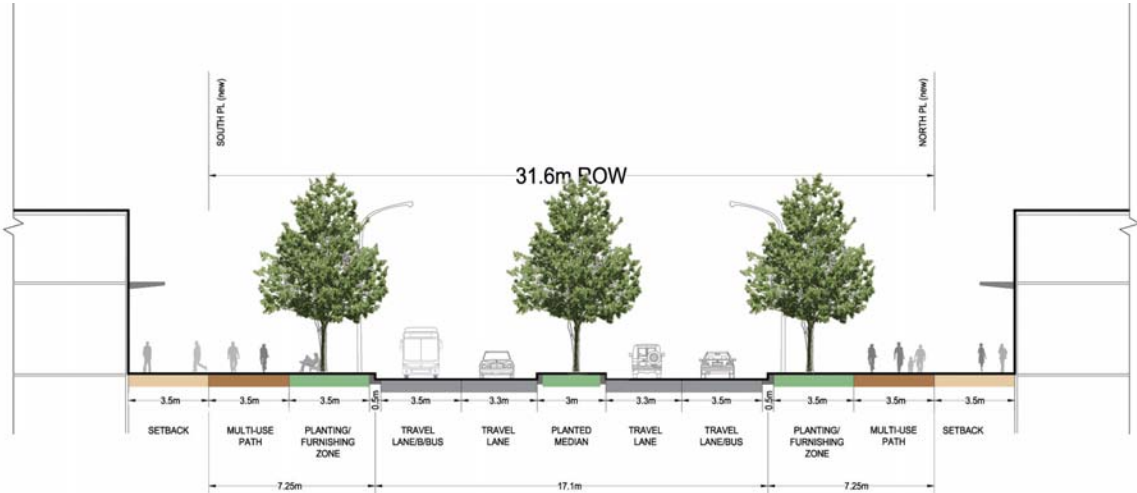
West Entrance to University (Section C-C')



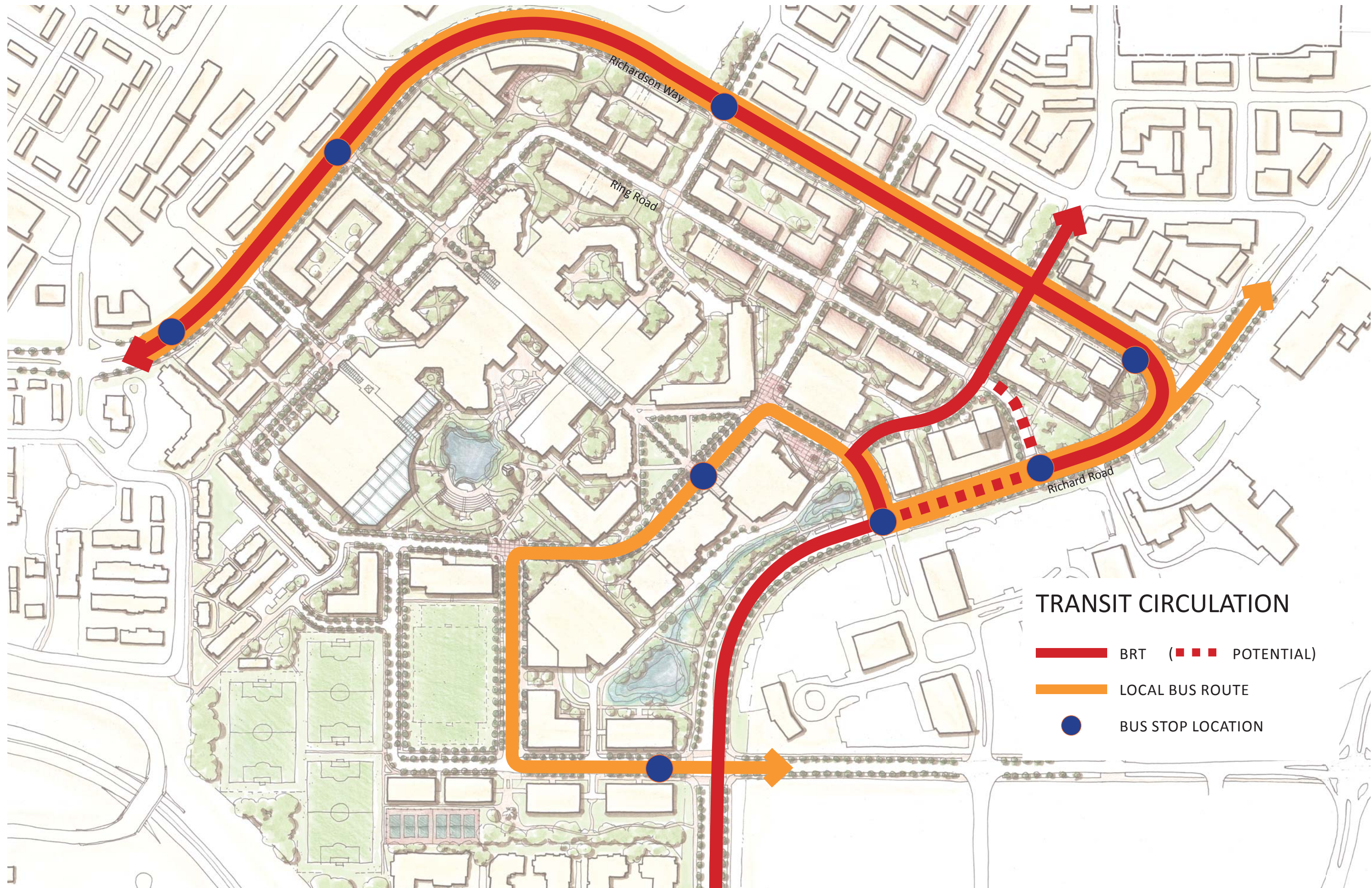
Bus Drop-off Zone (Section D-D')

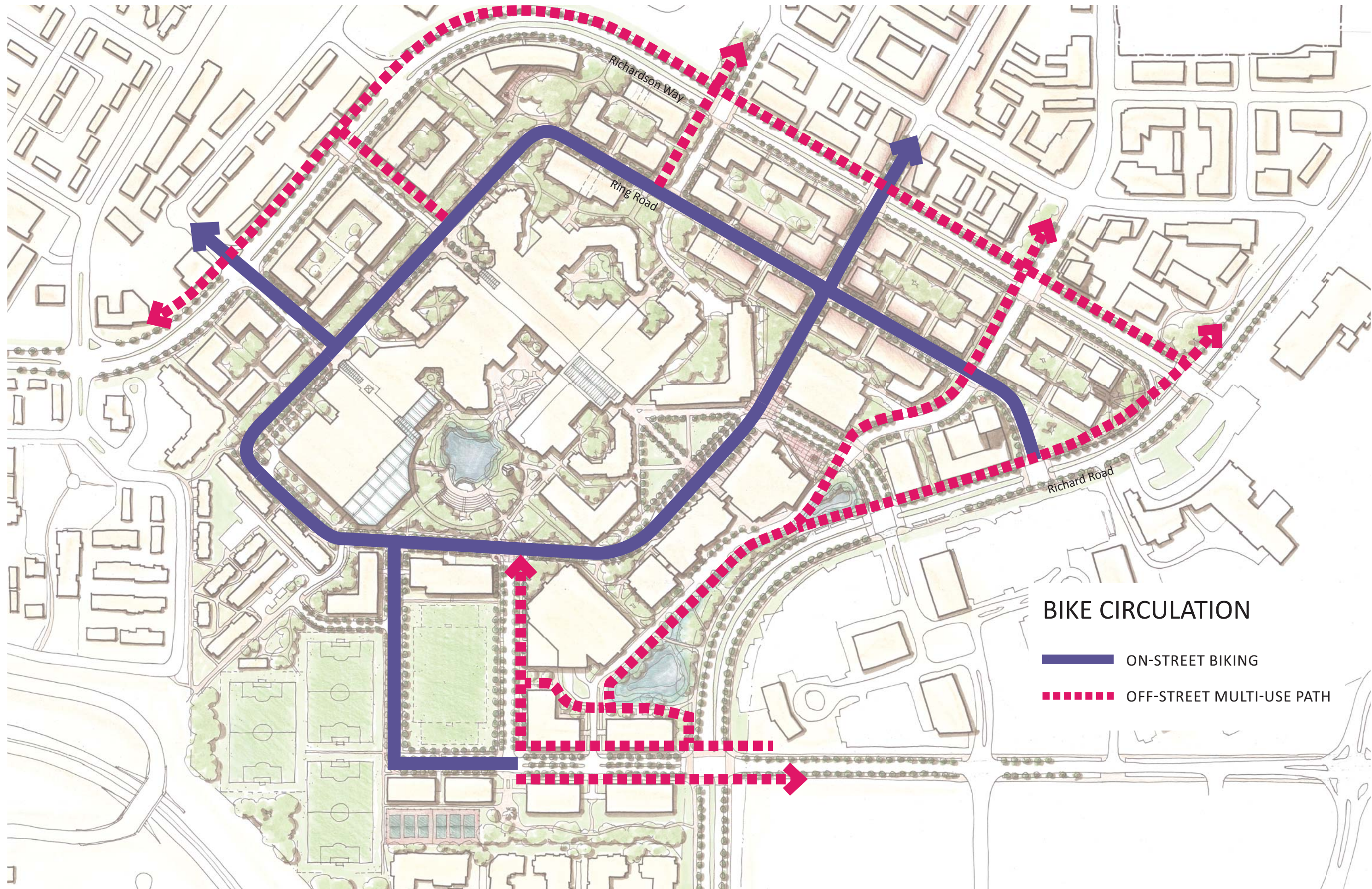


Two-lane Street - Typical (Section E-E')



Southeast Entrance (Section F-F')





BIKE CIRCULATION

- ON-STREET BIKING
- - - OFF-STREET MULTI-USE PATH